

BDC 100 ... 6000 MHz Dual Directional Coupler

STANDARD MODELS

Model	Part Number	Frequency Range	Coupling dB	Power	Insertion Loss	Directivity	VSWR	Main Line	Coupling Line
				Pmin W	max dB	min dB	max Main Line	Connectors	Connector(s)
BDC 0160-50/500	10024257	100 ... 6000 MHz		500	0.2	20	1.3:1	N-f/N-f	N-f
		142 ... 146 MHz	65 ±3						
		400 ... 470 MHz	56 ±3						
		700 ... 6000 MHz	50 ±2						



Technical drawing(s) on next page(s)

OPTIONS

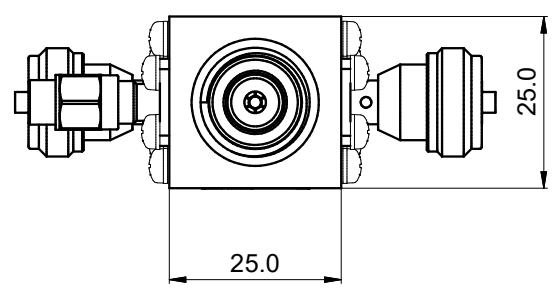
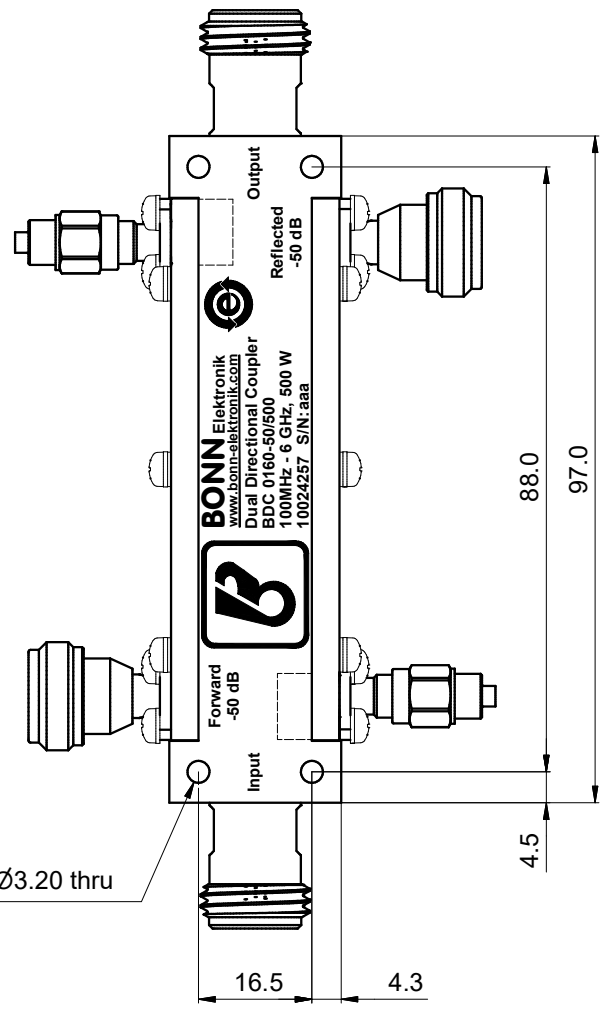
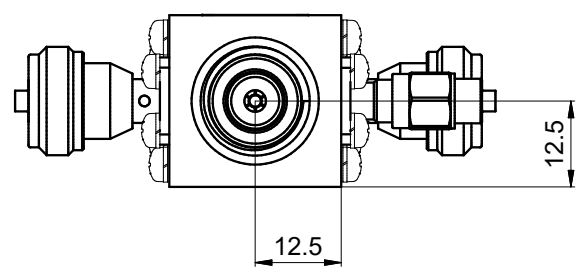
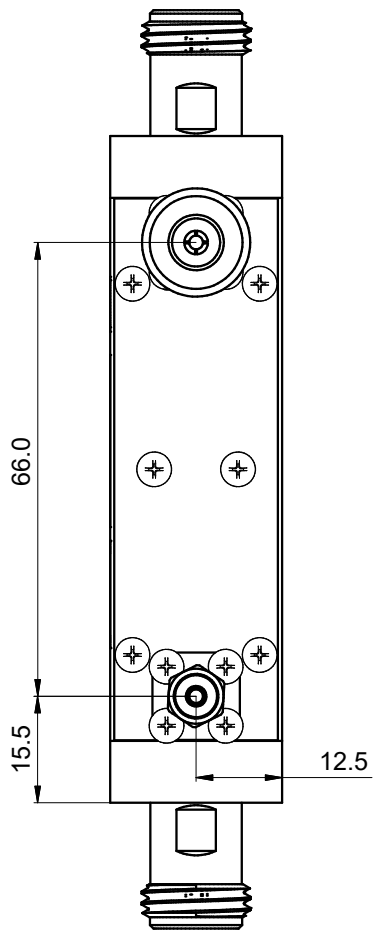
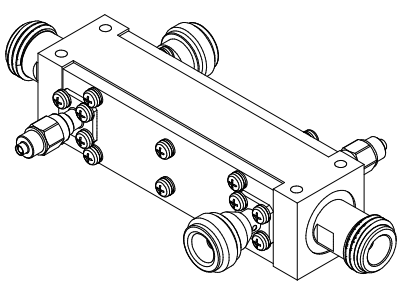
X) custom frequency range and custom coupling attenuation upon request

Dieses Dokument ist Eigentum der Firma Bonn Elektronik GmbH. Vervielfältigung und Veröffentlichung ohne ausdrückliche Genehmigung ist untersagt. Änderungen im Sinne des technischen Fortschritts können ohne Vorankündigungen vorgenommen werden. Wenn nichts anders angegeben alle Maße in Millimeter.

This document is the property of Bonn Elektronik GmbH. Reproduction and release without express permission is strictly prohibited. We reserve the right to introduce modifications without prior notification, where they serve technical progress. Unless otherwise indicated all dimensions in millimeters.

A
B
C
D

1 2 3 4



Product Information		Entwurf
10024257		14.12.2022 Bonn
Dual Directional Coupler		Zeichnung
BDC 0160-50/500		14.12.2022 Egger
		Prüfung
		Blatt
1-1		Freigabe
info@bonn-elektronik.com • www.bonn-elektronik.com		25.07.2024 Bonn